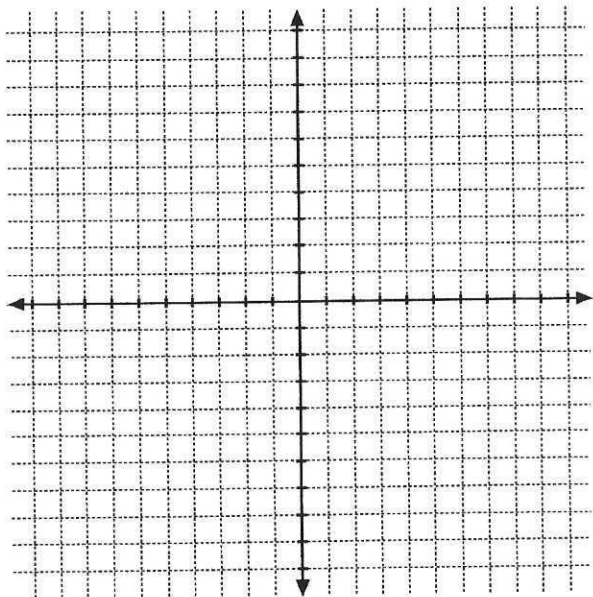


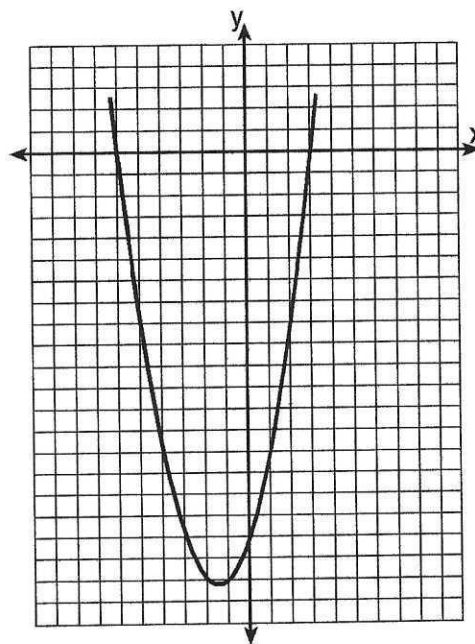
Name _____
8A: Algebra 1

Date _____
Period _____

Graphing Quadratics Homework



- 2) The graph of a quadratic equation is shown below. The scale on the axes is a unit scale. Write an equation of this graph in standard form.



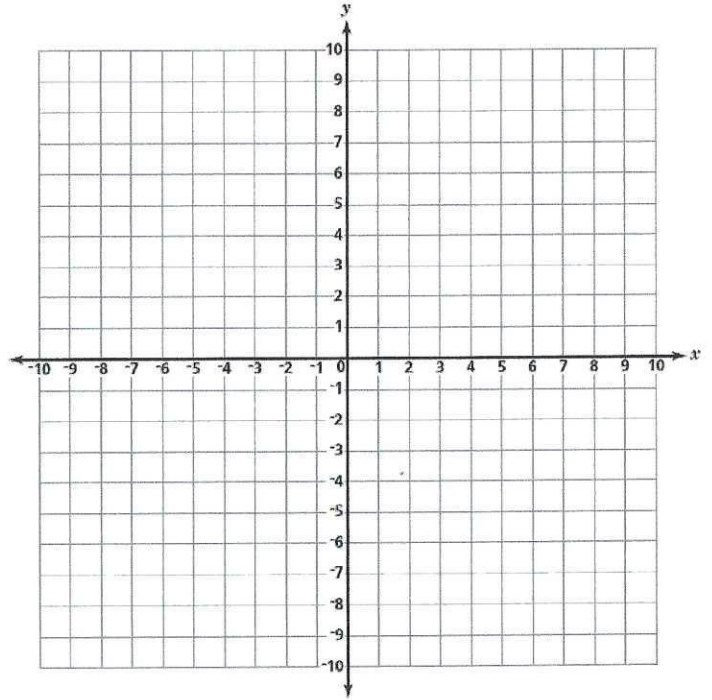
1) a) Draw the graph of the equation $y = x^2 - 6x + 3$ including all values of x such that $0 \leq x \leq 6$.

b) Which two consecutive integers is the smaller root between?

Example 3:

Sketch the graph of $y = x^2 + 3$

$a = \underline{\hspace{2cm}}$ $b = \underline{\hspace{2cm}}$ $c = \underline{\hspace{2cm}}$



Vertex:

AOS:

Roots:

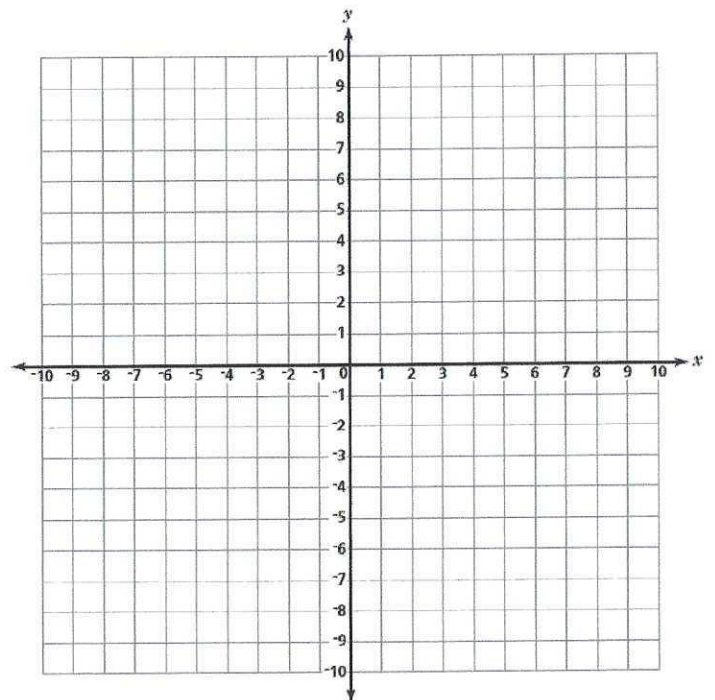
Opens:

Example 4:

Sketch the graph of $y = 2x^2 + 8x$ by filling in the table below

$a = \underline{\hspace{2cm}}$ $b = \underline{\hspace{2cm}}$ $c = \underline{\hspace{2cm}}$

x							
y							



Vertex:

AOS:

Roots:

Opens: