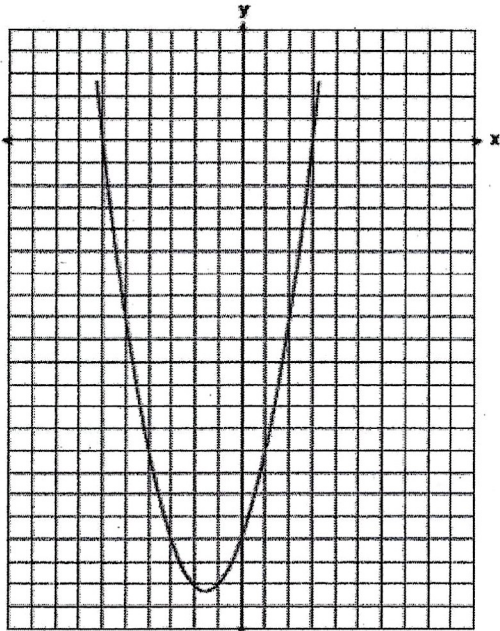


DO NOW

Directions: Answer each question. Show all work where necessary.

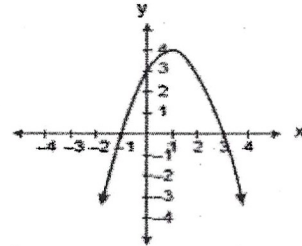
1. The graph of a quadratic equation is shown in the accompanying diagram. The scale on the axes is a unit scale. Write an equation of this graph in standard form.



- 1) $y = (x - 6)(x + 3)$
- 2) $y = (x + 6)(x + 3)$
- 3) $y = (x - 6)(x - 3)$
- 4) $y = (x + 6)(x - 3)$

2.

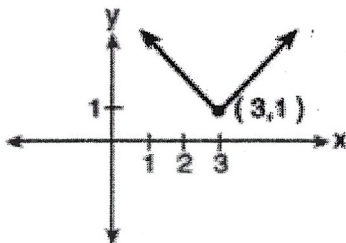
Which is an equation of the parabola shown in the accompanying diagram?



- 1) $y = -x^2 + 2x + 3$
- 2) $y = -x^2 - 2x + 3$
- 3) $y = x^2 + 2x + 3$
- 4) $y = x^2 - 2x + 3$

3.

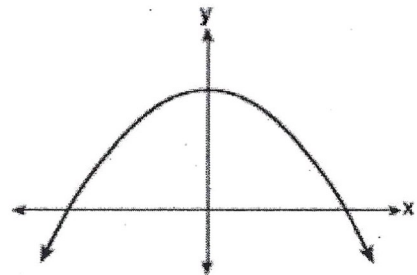
Which equation is represented by the accompanying graph?



- 1) $y = |x| - 3$
- 2) $y = (x - 3)^2 + 1$
- 3) $y = |x + 3| - 1$
- 4) $y = |x - 3| + 1$

4.

Which equation is best represented by the accompanying graph?



- 1) $y = 6^x$
- 2) $y = 6x^2$
- 3) $y = 6x + 1$
- 4) $y = -x^2 + 1$