

Name: Kerry

Date: _____

Algebra 1

Period _____

Homework

- 1) (a) Draw a graph of the equation $y = -x^2 + 4x - 3$ for all values of x such that $-1 \leq x \leq 5$.
- (b) On the same set of axes, draw the graph of $y + 1 = x$.
- (c) Using the graphs drawn in parts (a) and (b), determine the solution of the system:

$$y = -x^2 + 4x - 3$$

$$y + 1 = x$$

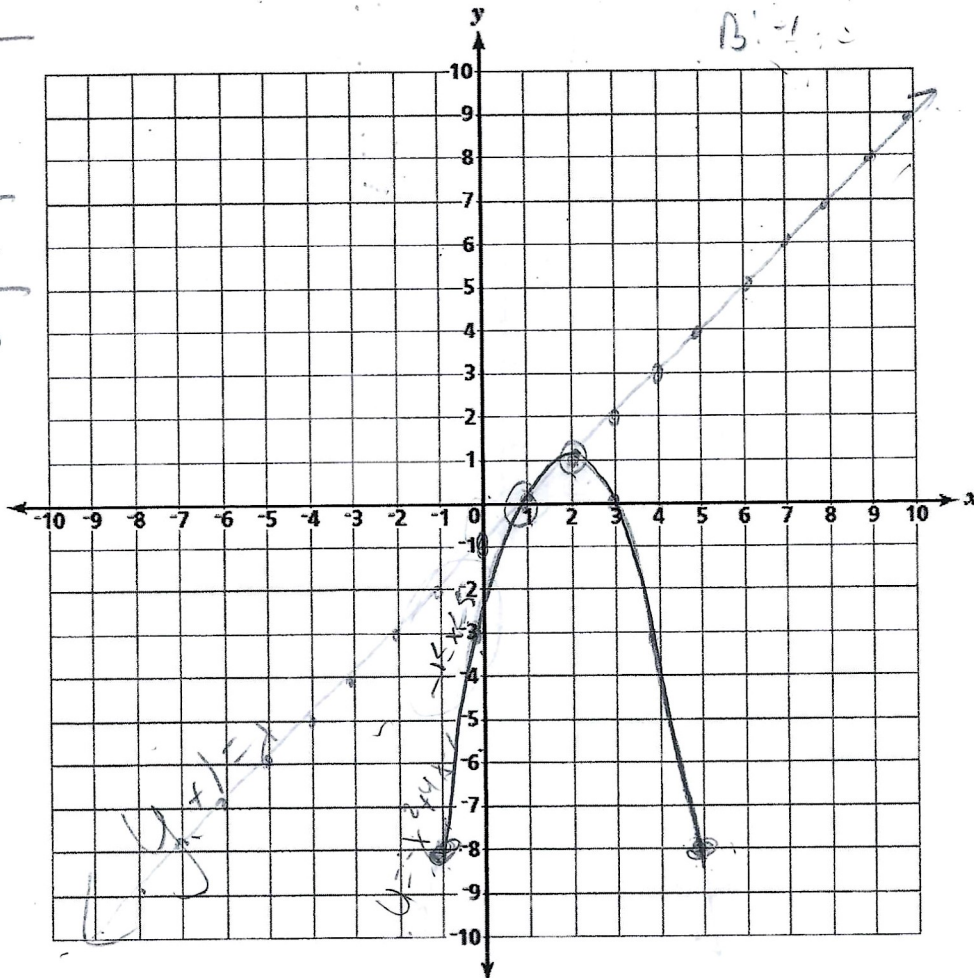
a)

x	y
-1	-8
0	-3
1	0
2	1
3	0
4	-3
5	-8

b) $y + 1 = x$

$$y = x - 1$$

$(1, 0)$ and $(2, 1)$



2) Solve the following system of equations graphically.

$$y = 2x^2 - 4x - 5$$

$$2x + y = -1$$

$$y = 2x^2 - 4x - 5$$

x	y
-1	1
0	-5
1	-7
2	-5
3	1

$$2x + y = -1$$

$$\begin{array}{r} -2x \quad -2x \\ \hline \end{array}$$

$$y = -2x - 1$$

$$m = -2$$

$$B^0 = -1$$

$$(-1, 1) \text{ and } (2, -5)$$

