

Name: Key

Date: \_\_\_\_\_

Mrs. Roubos

8A Period: \_\_\_\_\_

Point-Slope Do Now

- A) The following equation is in point-slope form. Using the equation, identify the point the line passes through and the slope of the line.

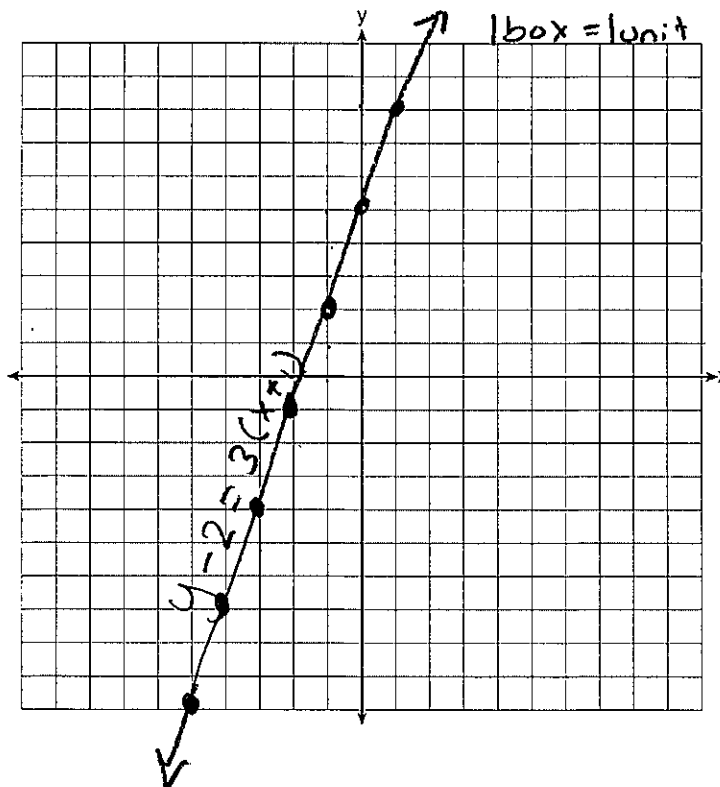
$$y - 2 = 3(x + 1)$$

Point:  $(-1, 2)$

Slope: 3

- B) Graph  $y - 2 = 3(x + 1)$  using the point and the slope from above

slope =  $\frac{3}{1}$



\*Start at  $(-1, 2)$   
and move up 3  
and right 1