

Name: \_\_\_\_\_

Mrs. Roumbos

Date: \_\_\_\_\_

8R Period \_\_\_\_\_

### PAIRS OF ANGLES

I. Write the measure of the complement of each angle:

1)  $40^\circ$

2)  $25^\circ$

3)  $68.5^\circ$

II. Write the measure of the supplement of each angle:

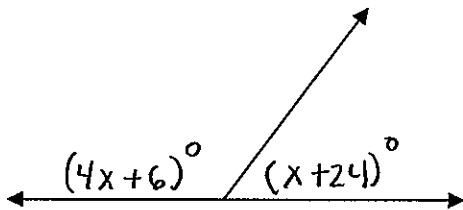
1)  $50^\circ$

2)  $110^\circ$

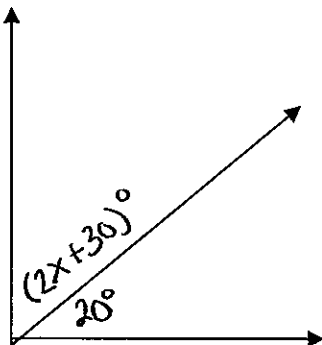
3)  $125^\circ$

III. Solve for x

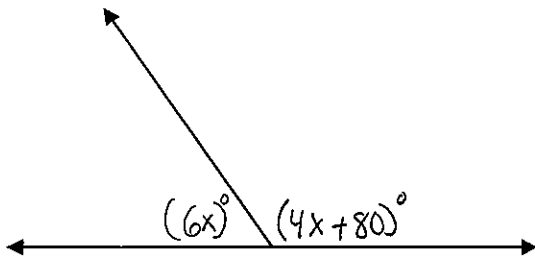
1)



2)



3)



---

IV. Find the measure of each angle if angle A and angle B are complementary

1) Angle A =  $x$ , Angle B =  $5x$

2) Angle B =  $y$ , Angle A =  $2y + 30$

Find the measure of each angle if angle A and angle B are supplementary

1) Angle A =  $x$ , Angle B =  $3x$

2) Angle B =  $y$ , Angle A =  $y + 80$