

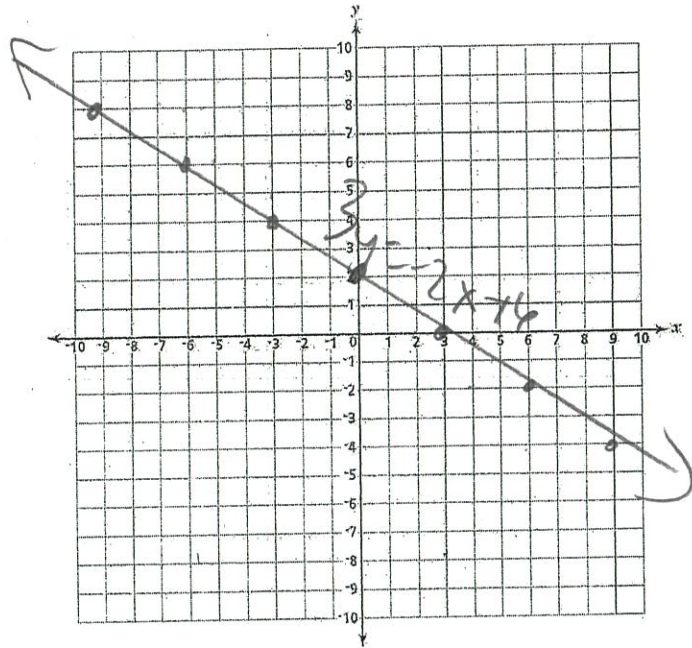
Graphing Equations

Graph the following equations. Make sure to label the slope (m) and the y-intercept (b) of each line

1) $\frac{3y}{3} = \frac{-2x + 6}{3}$
 $y = -\frac{2}{3}x + 2$

$m = \frac{-2}{3}$
or $\frac{-2}{3}$

$b = 2$
eg. in.

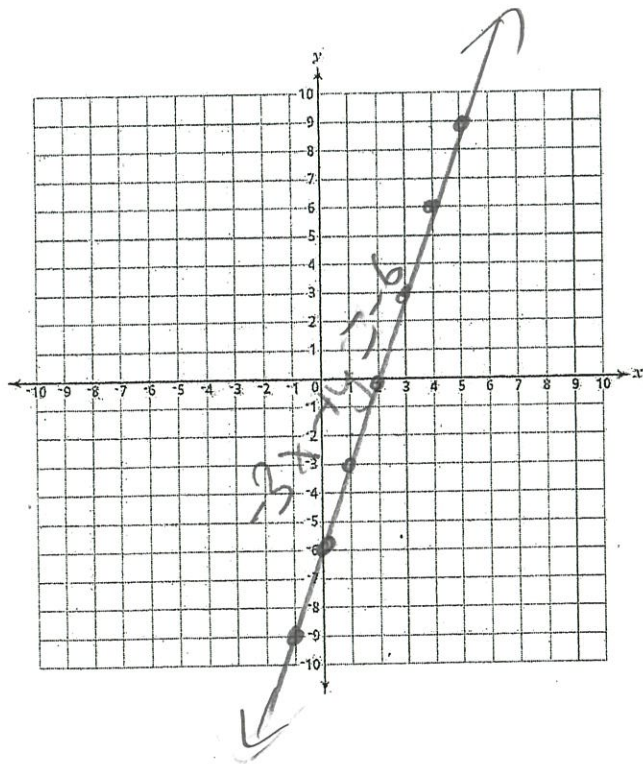


2) $-3x + y = -6$
 $+3x$ $+3x$

$y = 3x - 6$

$m = \frac{3}{1}$

$b = -6$



$$3) \quad x + 3y = 9$$

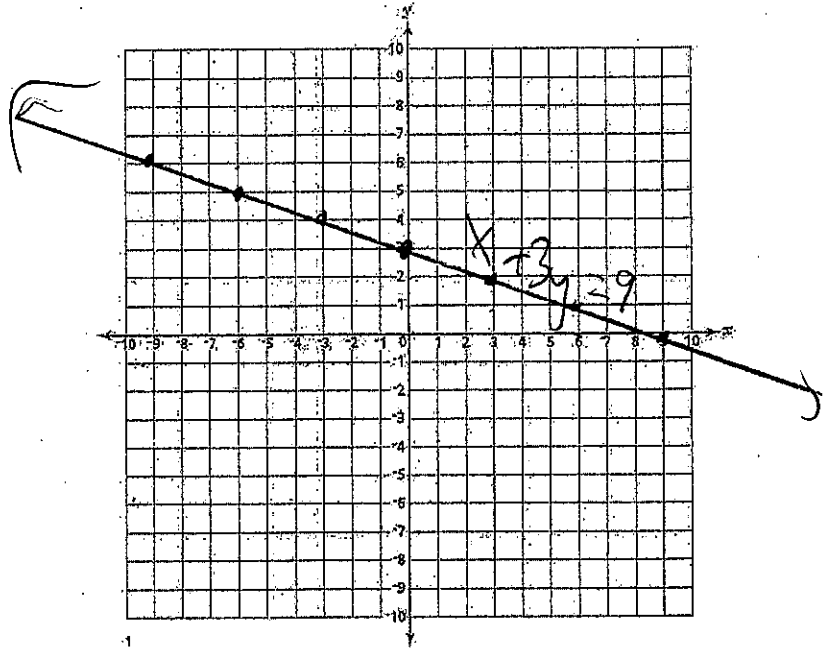
$$\frac{-x}{-x} \quad \rightarrow$$

$$\frac{3y}{3} = \frac{-x}{3} + \frac{9}{3}$$

$$y = -\frac{1}{3}x + 3$$

$$m = -\frac{1}{3} \rightarrow$$

$$B = 3$$



4)

$$4y - 2x = -8$$

$$\frac{+2x}{+2x} \quad \frac{+2x}{+2x}$$

$$\frac{4y}{4} = \frac{2x}{4} - \frac{8}{4}$$

$$y = \frac{1}{2}x - 2$$

$$m = \frac{1}{2} \rightarrow$$

$$B = -2$$

