

Name Key

Lesson Page

An Intuitive Notion of Rotation



Math A

Translation - slide
Reflection - flip

A **rotation** is a transformation that **turns** a figure about a fixed point called the center of rotation. An object and its rotation are the **same shape and size**, but the **figures may be turned in different directions**.

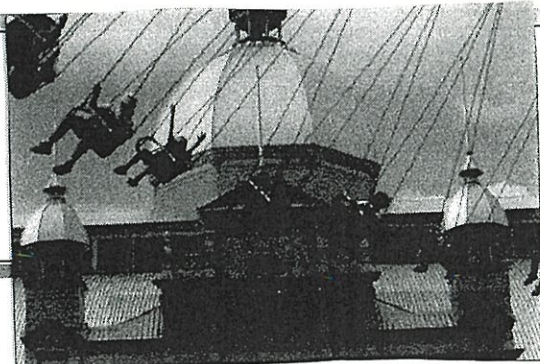
→ Descriptive word

↳ turn

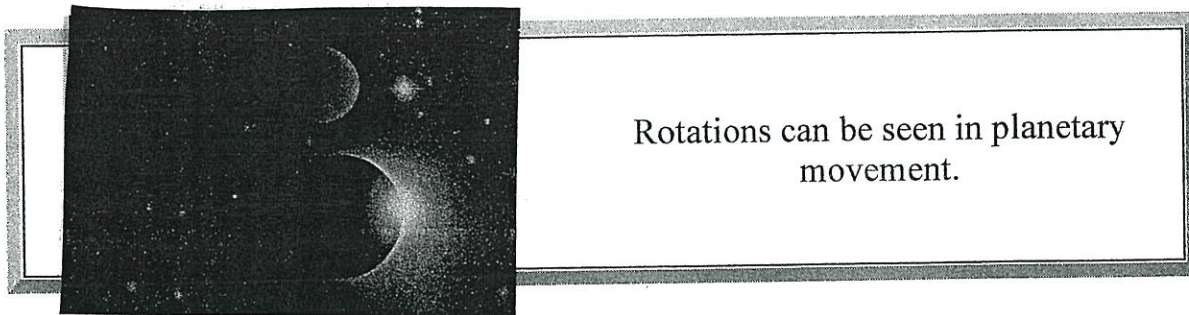
↓
Congruent



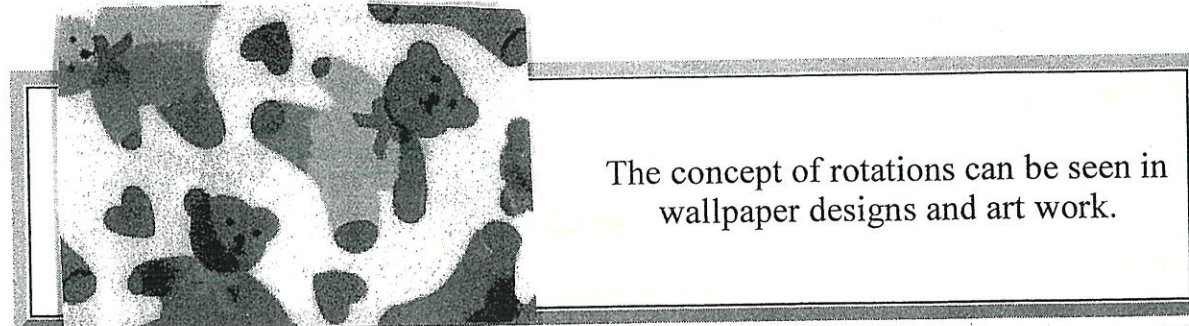
When you are riding on a ferris wheel, you are experiencing a rotation.



Amusement park swings allow you to experience a rotation.



Rotations can be seen in planetary movement.

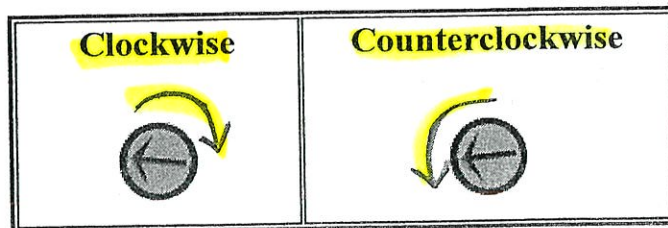
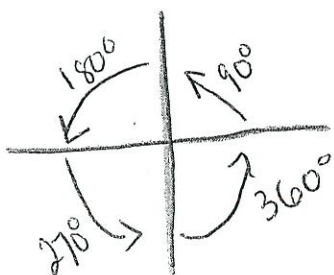


The concept of rotations can be seen in wallpaper designs and art work.



Rotations are **URNS!!!**

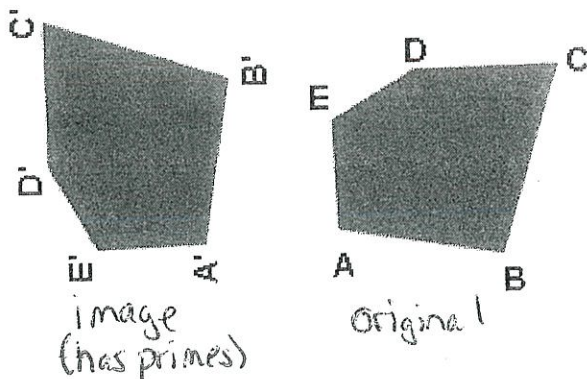
In mathematics, the rotation of an object is called its **image**. If the original object was labeled with letters, such as polygon ABCDE, the image may be labeled with the same letters followed by a **prime** symbol, A'B'C'D'E'. Rotations can occur in either a **clockwise** or **counterclockwise** direction.



Right

Left

* 90° = on its side ↑ 1 turn
 * 180° = upside down ↓ 2 turns



This rotation is 90° counterclockwise.

An Intuitive Notion of Dilation

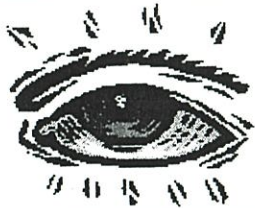
Math A



A **dilation** is a transformation that produces an image that is the **same shape** as the original, but is a **different size**.

Similar

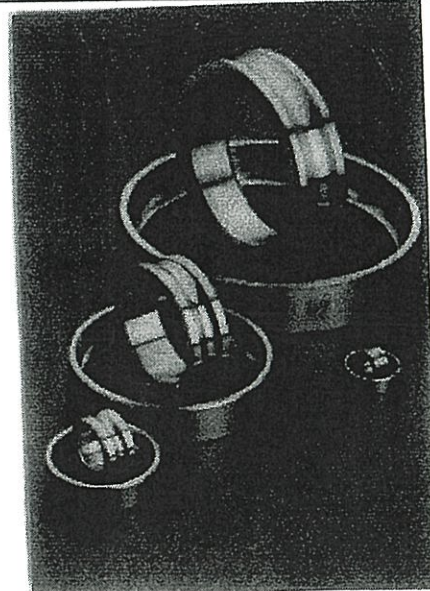
A dilation used to create an image **larger** than the original is called an **enlargement**. A dilation used to create an image **smaller** than the original is called **a reduction**.



You are probably familiar with the word "dilate" as it relates to the eye. *"The pupils of the eye were dilated."* As light hits the eye, the pupil enlarges or contracts depending upon the amount of light. This concept of enlarging and contracting is "dilating".

The washers shown in this photo illustrate the concept of dilation.

The washers are the **same shape**, but they are **different in size**.



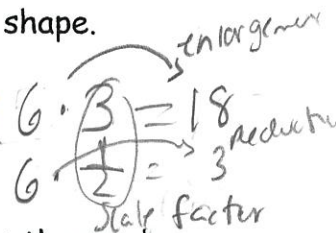
Dilation

I. Scale factor: what you multiply by to enlarge or reduce a shape.

**If the scale factor is greater than 1 it is an enlargement

If the scale factor is less than 1 it is a reduction.

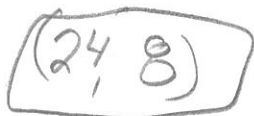
(But more than 0)



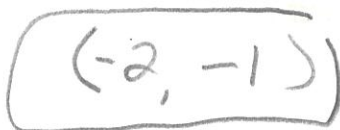
II Symbol: $D_{\#}$ The number that is in the number sign spot is the number that you multiply. For example: D_2 The scale factor would be 2 so you would multiply the dimensions or coordinates by 2~

III. Examples:

1) Find the image of $(6, 2)$ under the dilation D_4 Scale factor

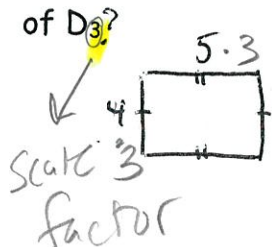


2) Find the image of $(-4, -2)$ under the dilation $D_{\frac{1}{2}}$ Scale factor

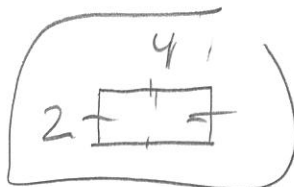
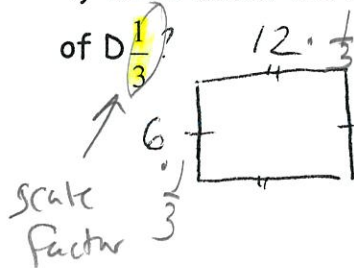


$$-4 \cdot \frac{1}{2}$$

3) What would the new dimensions of the rectangle below be after a dilation of D_3 ?



4) What would the new dimensions of the rectangle below be after a dilation of $D_{\frac{1}{3}}$?



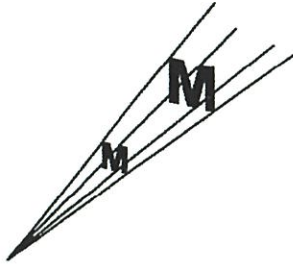
Name: _____

Date: _____

8R Period _____

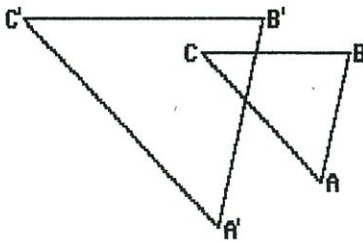
ROTATION / DILATION WORKSHEET

- 1) What type of transformation for letter M is shown in the accompanying diagram?



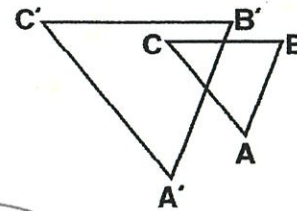
- A) rotation
 B) dilation
 C) line reflection
 D) translation

- 2) In the diagram below, $\triangle ABC$ is similar but **not congruent** to $\triangle A'B'C'$. Which transformation is represented by $\triangle A'B'C'$?



- A) translation
 B) dilation
 C) reflection
 D) rotation

- 3) In the diagram below, $\triangle ABC$ is similar but **not congruent** to $\triangle A'B'C'$. What type of transformation is represented by $\triangle A'B'C'$?



- A) dilation
 B) reflection
 C) rotation
 D) translation

- 4) Under what type of transformation is **size not preserved**? *Size is not the same*

- A) rotation
 B) dilation
 C) translation
 D) reflection

- 5) A **rotation** of a figure can be considered
- A) a mirror image of the figure
 B) a slide of the figure
 C) an enlargement or a reduction of the figure
 D) a turning of the figure about some fixed point

☆ assume counterclockwise
 p
 ☆ upside down
 ☆ 2 turns

6) If the letter **p** is rotated 180 degrees, which of the following is the resulting figure?

- A) **b**
- B) **q**
- C) **p**
- D) **d**

7) The *best* description of a **dilation** of a figure is

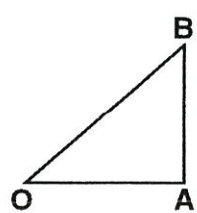
- A) a slide of the figure
- B) **an enlargement or a reduction of the figure**
- C) a mirror image of the figure
- D) a turning of the figure about some fixed point

8) What type of transformation is represented by the illustration?



- A) **dilation**
- B) reflection
- C) rotation
- D) translation

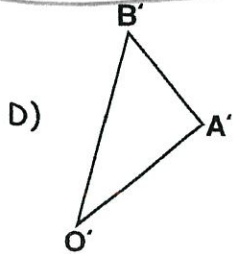
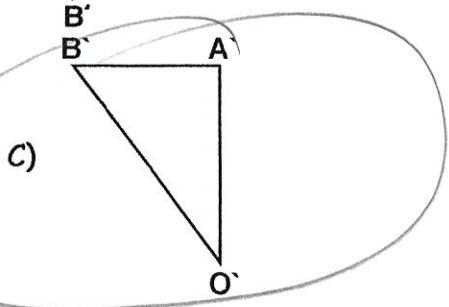
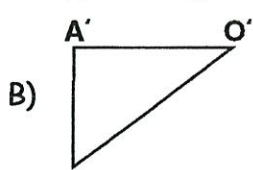
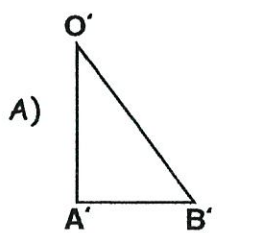
9) In the accompanying diagram, if $\triangle OAB$ is rotated **counterclockwise** 90° about point O , which one of the following figures represent the image of this rotation?



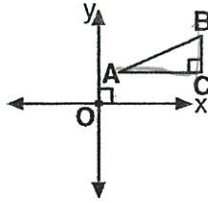
left

on its side

1 turn

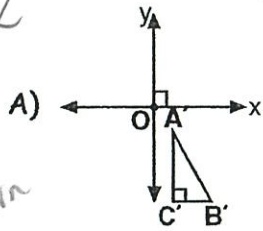


- 10) In the accompanying diagram, $\triangle ABC$ is a right triangle.

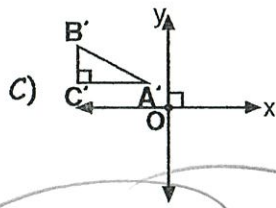
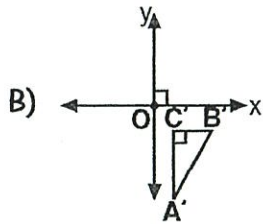


Which one of the following diagrams represents the image of $\triangle ABC$ when rotated 90° counterclockwise about the origin?

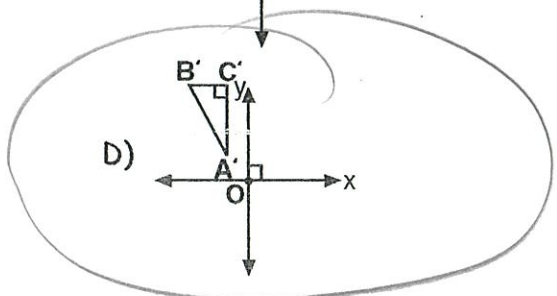
on its side
90° Turn



left



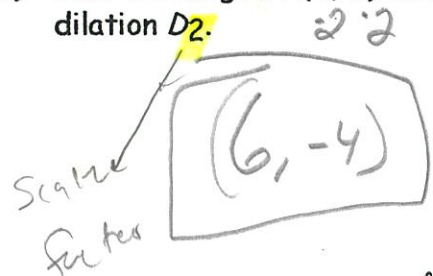
Reflection over y-axis



- 11) Under what type of transformation can the image be a different size than the original figure?

- A) rotation
B) translation
C) dilation
D) reflection

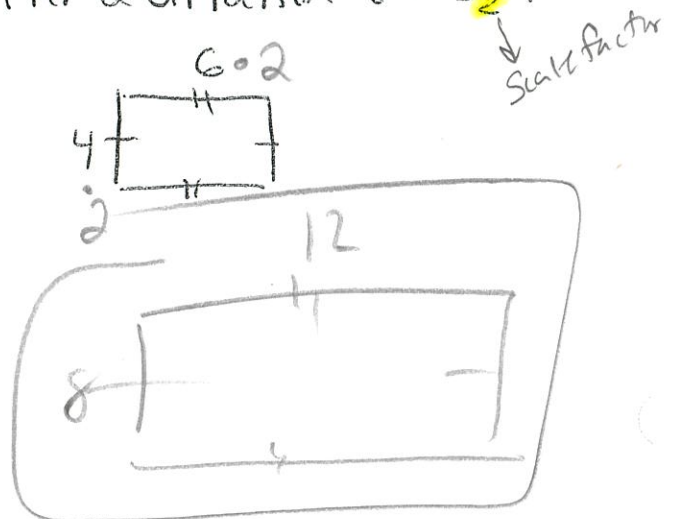
- 12) Find the image of $(3, -2)$ under the dilation D_2 .



- 13) Find the image of $(-6, 4)$ under the dilation $D_{\frac{1}{2}}$.



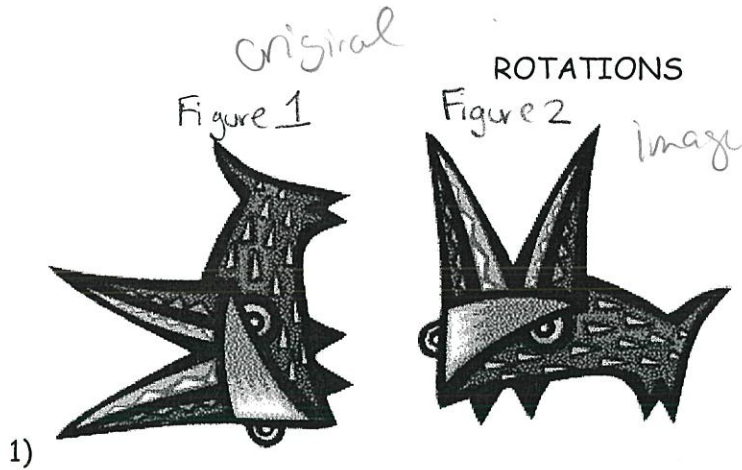
- 14) What would the new dimension of the rectangle below be after a dilation of D_2 ?



Name: _____

Date: _____

SR Period _____

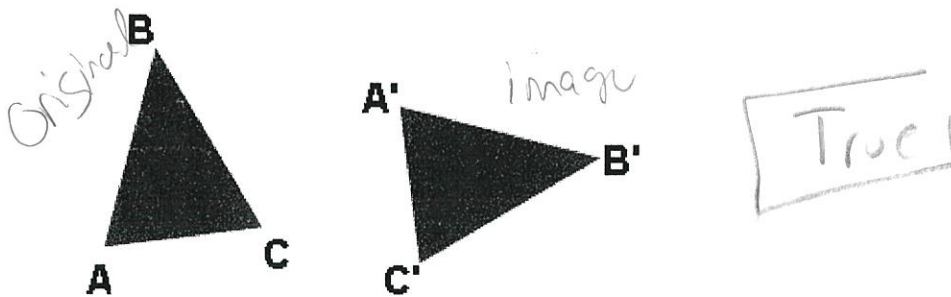


1)

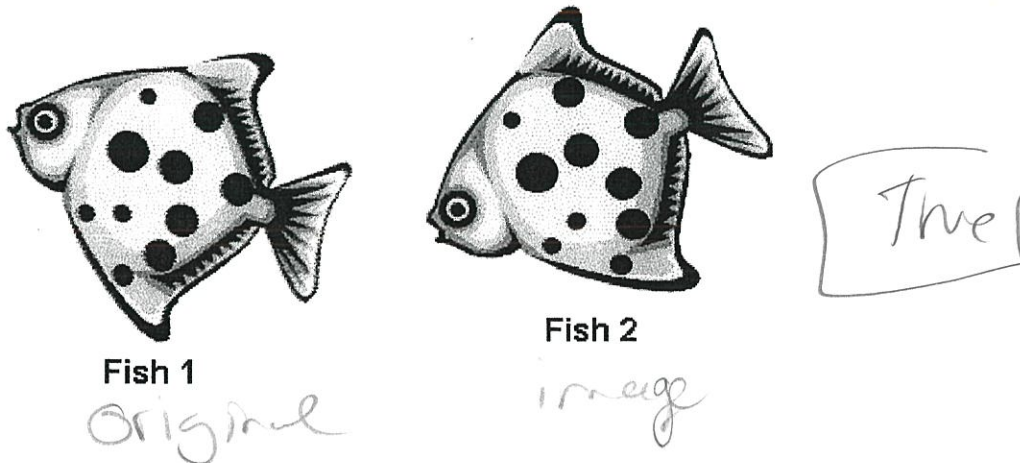
Has this drawing been rotated 180 degrees?

NO! 90° Clockwise

2) This triangle has been rotated in a clockwise direction. True or False?

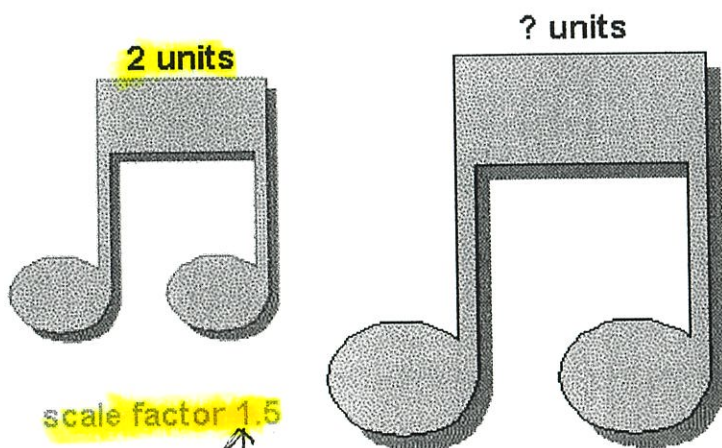
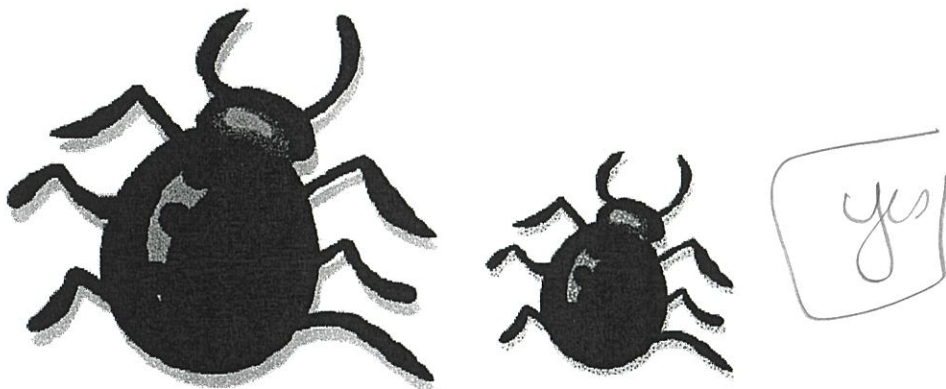


3) Fish 2 is a 45 degree counter-clockwise rotation of fish one? True or False?



DILATIONS

1) Is this an example of a dilation?



*Remember
Scale factor is
what you multiply by!

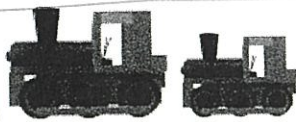
2)

Under the dilation shown at the left, the value of the "?" will be:

- 1.5
- 3
- 4

$$2 \cdot (1.5) = 3$$

3)



The length of the small train is 4 inches. Under a dilation of scale factor 2, what is the length of the large train?

$$4 \cdot 2 = 8 \quad \boxed{8 \text{ inches}}$$

