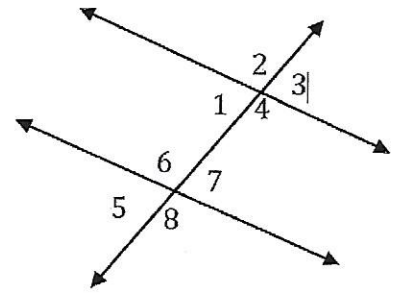


Do Now

1) Directions: Classify each pair of angles in the figure below.



$\angle 2$ and $\angle 8$
Alternate Exterior
 \angle 's

$\angle 5$ and $\angle 7$
Vertical \angle 's

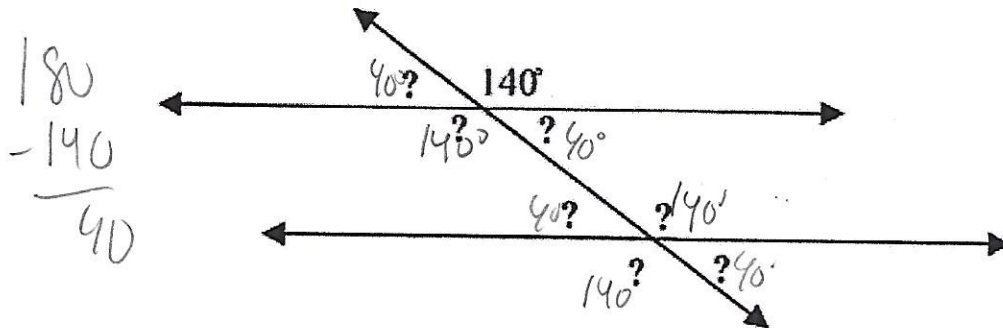
$\angle 1$ and $\angle 5$
Corresponding \angle 's

$\angle 5$ and $\angle 8$
Supplementary \angle 's

$\angle 4$ and $\angle 6$
Alternate Interior \angle 's

$\angle 3$ and $\angle 7$
Corresponding \angle 's

2) Find all of the missing angle measures using the diagram below. Write the angle measurements directly on the diagram.



3) In the diagram below, lines p and q are parallel.

Which angles must be congruent to $\angle 3$?

- A) 8 only
- B) 1, 6 and 8 only
- C) 1, 2, 4 and 8 only
- D) 2, 6, 7, and 8 only

