

Name Key  
Mrs. Roubos

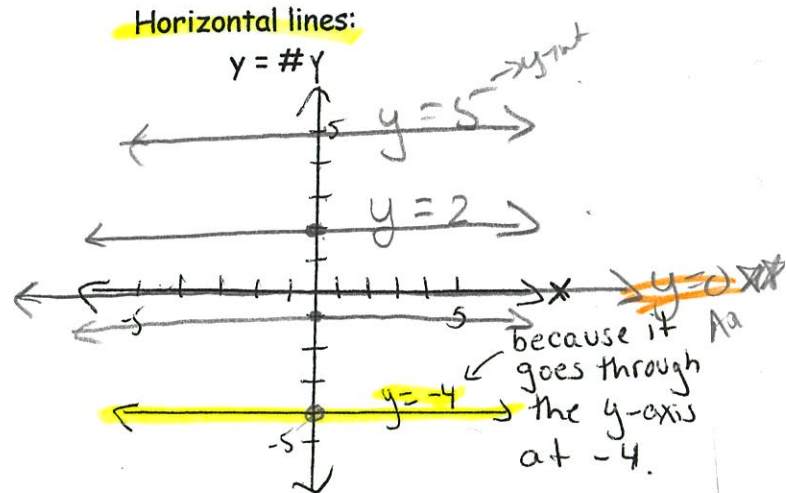
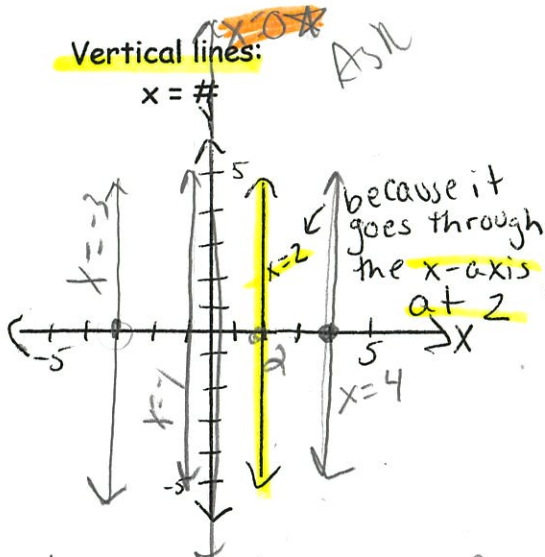
$$y = mx + b$$
$$m = 5$$
$$b = -2$$
$$y = 5x - 2$$

Diagonal

Date \_\_\_\_\_  
8R Period \_\_\_\_\_

### Horizontal vs Vertical Lines Do Now

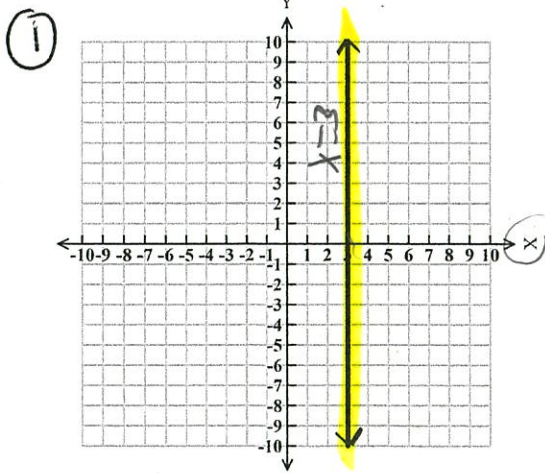
### Equations of Vertical & Horizontal lines



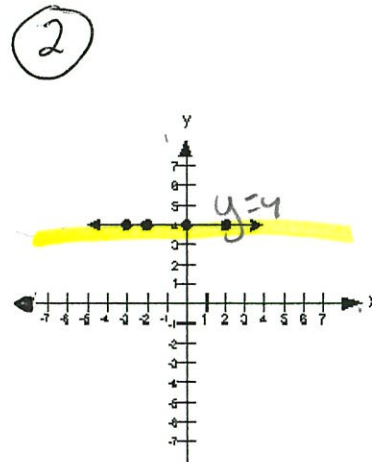
type of slope: undefined

type of slope: zero

What are the equations of the lines graphed below?



$$x = 3$$



$$y = 4$$