

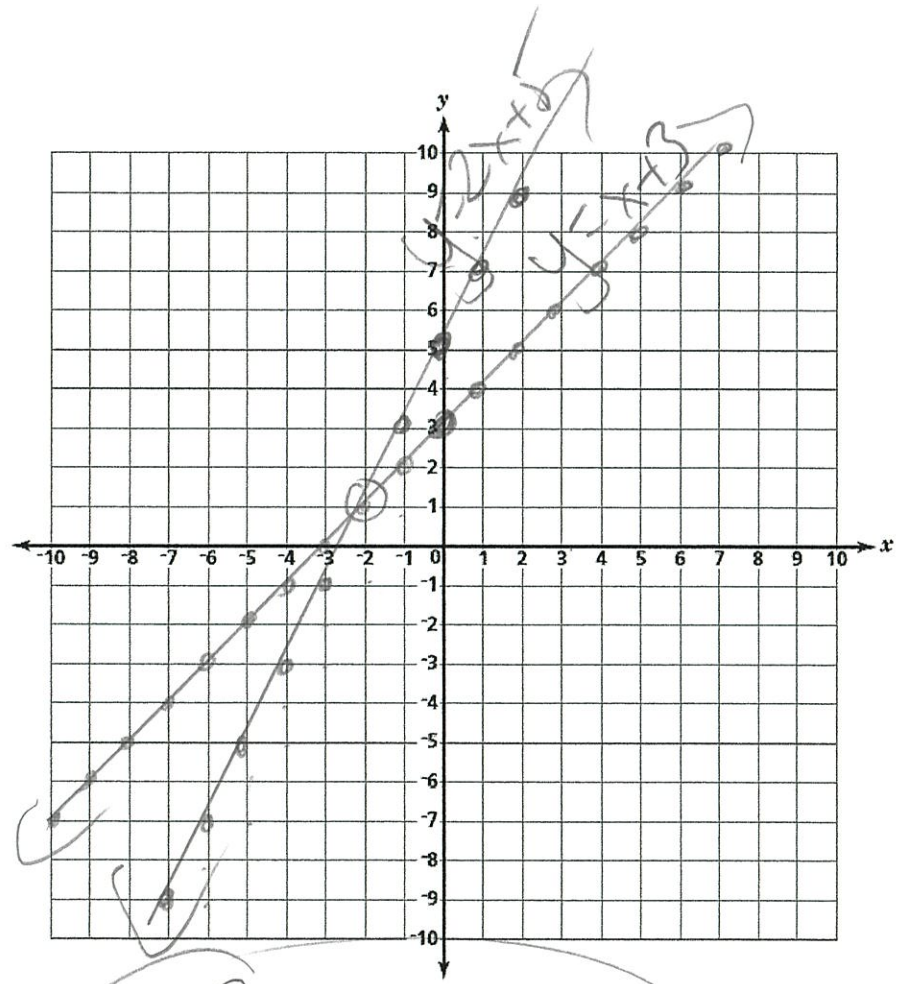
Do Now

Graph the following system of equations. Then, find the solution point.

$y = x + 3$
 $y = 2x + 5$

$y = x + 3$
m: $\frac{1}{1}$ ↑
B: 3
eqn

$y = 2x + 5$
m: $\frac{2}{1}$ ↑
B: 5



$(-2, 1)$

Consistent