

Name: Key

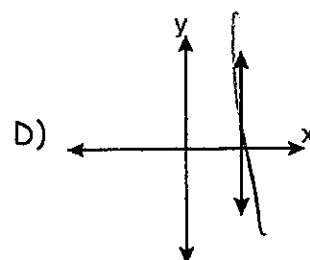
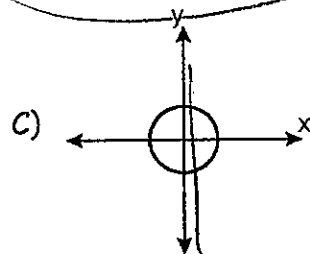
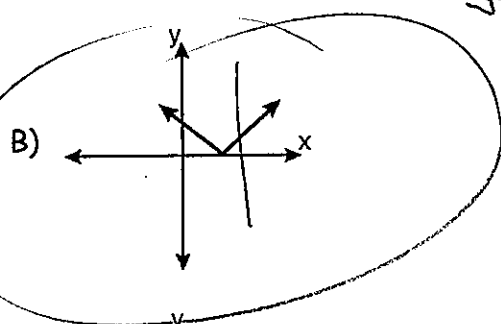
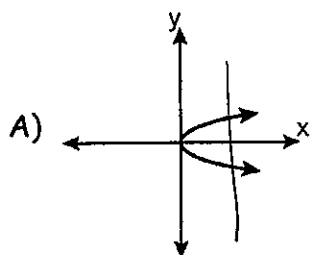
Date \_\_\_\_\_

Mrs. Roubos

8R Period \_\_\_\_\_

## Do Now

- 1) Which one of the following graphs represents a function?



passes the  
vertical  
line test

- 2) Which set of ordered pairs represents a function?  $\rightarrow$  X's can't repeat

A)  $\{(0,4), (2,4), (2,5)\}$

B)  $\{(0,4), (1,4), (0,5), (1,5)\}$

C)  $\{(6,0), (5,0), (4,0)\}$

D)  $\{(4,1), (6,2), (6,3), (5,0)\}$

- 3) Given the following relation:  
 $\{(-2,1), (-1,0), (0,1), (-1,2)\}$

## PART A:

What is the range of the relation?

Answer:  $\{0, 1, 2\}$

## PART B:

What is the domain of the relation?

Answer:  $\{-2, -1, 0\}$

## PART C:

Explain how you arrived at your answers to Part A and Part B.

## PART D:

Is the given relation a function? Why or why not?

Answer: NO, b/c x-values repeat

look at  
the original  
#'s

(the -1 repeats)

\* must  
list in  
numerical  
order  
\* DO NOT  
list any  
repeats