

Name Key  
Mrs. Roumbos

Date: \_\_\_\_\_  
8R Period \_\_\_\_\_

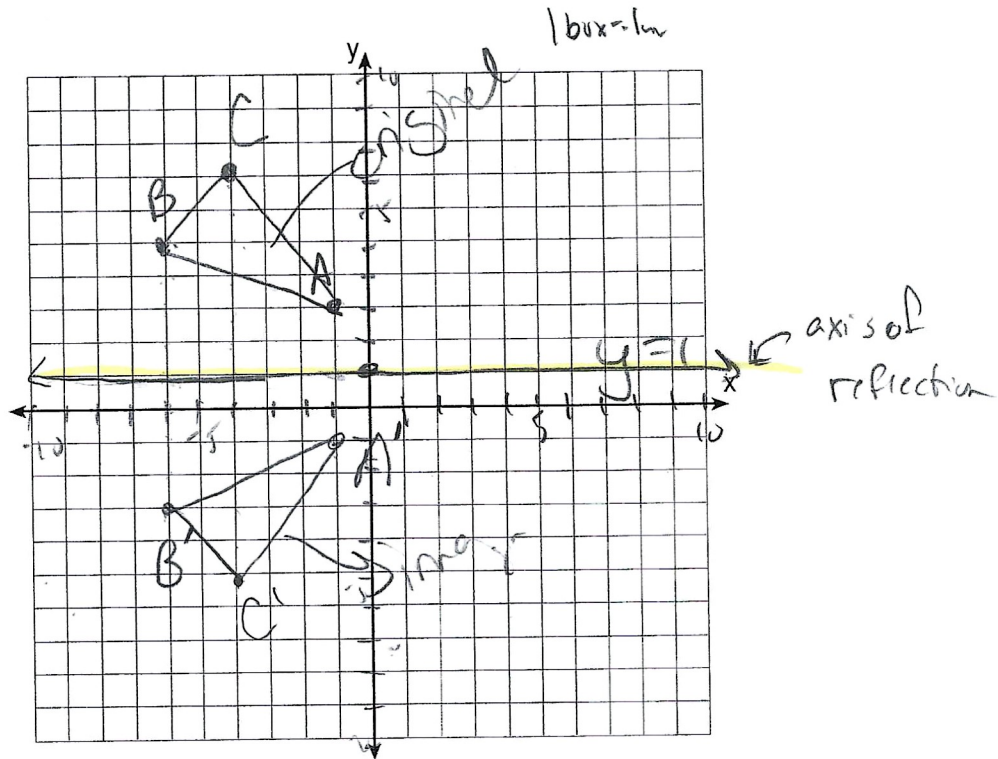
Do Now  
Line Reflections

1) Triangle ABC has the coordinates  $A(-1,3)$ ,  $B(-6,5)$ , and  $C(-4,7)$   
     $\leftarrow \uparrow \quad \leftarrow \uparrow \quad \leftarrow \uparrow$

On the following graph:

- a) Graph and label  $\Delta ABC$
- b) Graph the line  $y=1$
- c) Graph and label  $\Delta A'B'C'$  the image of  $\Delta ABC$  after a reflection over  $y=1$

$y=1$   
 $m:0$   
 $B:1$



## Do Now Continued

2) Quadrilateral MATH has the coordinates  $M(8,3)$ ,  $A(8,-2)$ ,  $T(5,-9)$ , and  $H(5,5)$ .  
 $\rightarrow \uparrow \rightarrow \downarrow \rightarrow \downarrow \rightarrow \uparrow$

On the following graph:

- Graph and label quadrilateral MATH
- Graph the line  $x = 3$
- Graph and label quadrilateral  $M'A'T'H'$  the image of quadrilateral MATH after a reflection over the line  $x = 3$

$$M'(-2, 3) \quad A'(-2, -2) \quad T'(1, -9) \quad H'(1, 5)$$

