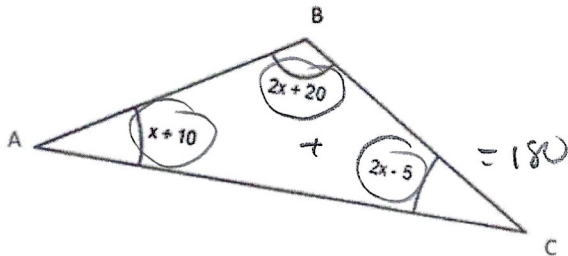


Do Now

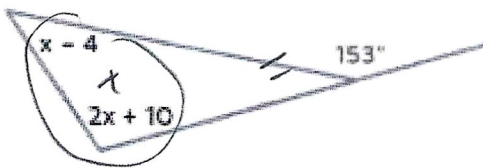
1) Solve for x:



$$x+10+2x+20+2x-5=180$$

$$\begin{aligned} 5x+25 &= 180 \\ -25 & \quad -25 \\ \hline 5x &= 155 \\ \frac{5x}{5} &= \frac{155}{5} \\ \boxed{x=31} \end{aligned}$$

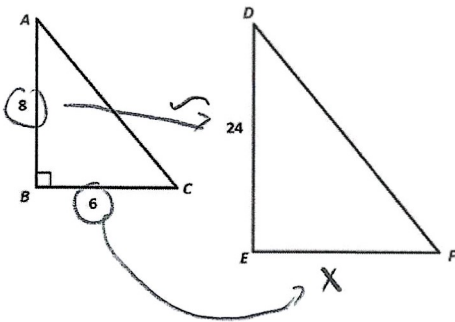
2) Solve for x:



$$x-4+2x+10=153$$

$$\begin{aligned} 3x+6 &= 153 \\ -6 & \quad -6 \\ \hline 3x &= 147 \\ \frac{3x}{3} &= \frac{147}{3} \\ \boxed{x=49} \end{aligned}$$

3) Solve for \overline{EF}



$$\frac{8}{24} = \frac{6}{x}$$

$$\frac{8x}{8} = \frac{144}{8}$$

$$\begin{aligned} \boxed{x=18} \\ \overline{EF} = 18 \end{aligned}$$