

Name _____

Math 8R

Date _____

Period _____

Do Now: Vocabulary Review

Part I: Fill in the blanks based on what you recall from our past units of instruction.

Word box:

equal

straight line

intersect

sum

rate of change

exterior angle

positive

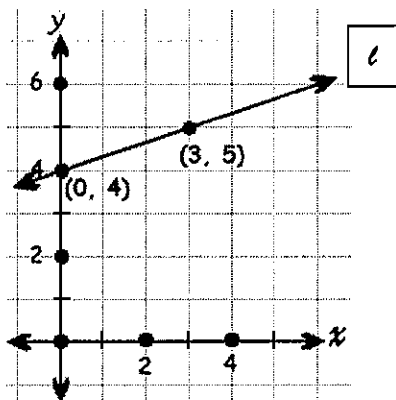
negative

curve

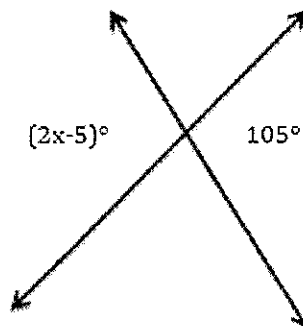
1. Another name for slope is _____
2. Vertical angles are _____ in measure
3. The solution point to a system of linear equations is the point where the two lines _____
4. The _____ of the two non-adjacent interior angles of a triangle is equal to the measure of the _____.
5. If a function is linear, the graph looks like a _____
6. If a function is increasing it has a _____ slope.

Part II: Answer the questions below based on the vocabulary above and your knowledge of mathematics.

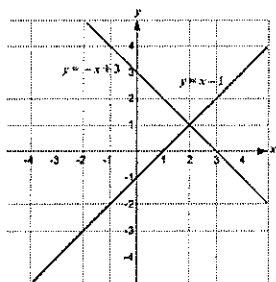
1) What is the rate of change of line l shown in the accompanying diagram?



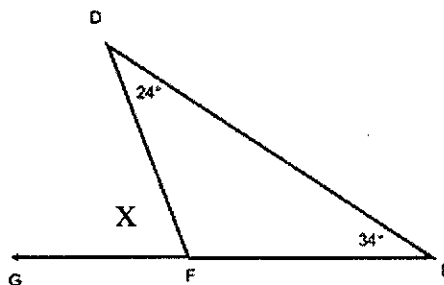
2) What is the value of x in the diagram shown?



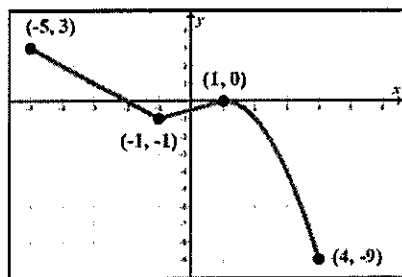
3) Which ordered pair is a solution to the system of equations shown below?



4) Find the value of x in the diagram shown.



5) In which interval is the graph below linear and increasing?



- a) from $x = -5$ to $x = -1$
- b) from $x = -1$ to $x = 1$
- c) from $x = 1$ to $x = 4$
- d) from $x = -5$ to $x = 4$