

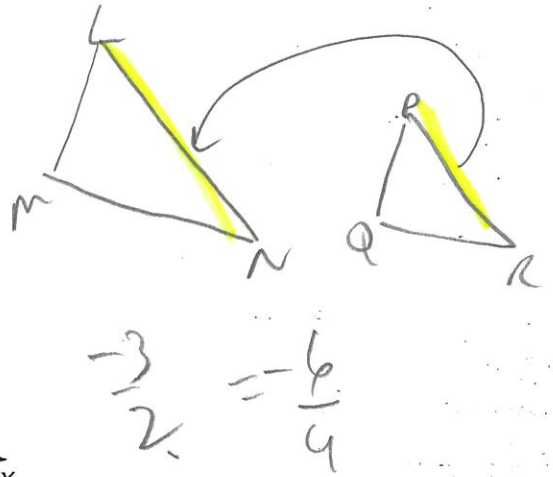
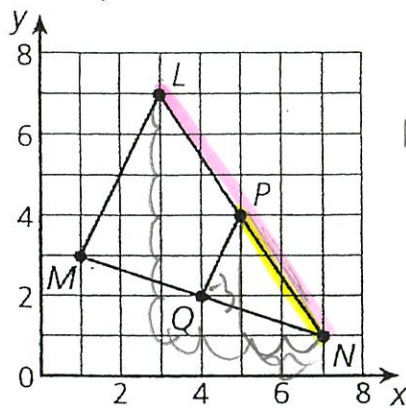
Name \_\_\_\_\_

Key

Date \_\_\_\_\_

## Do Now

Similar triangles  $LMN$  and  $PQN$  are shown on this coordinate plane.



Which statement must be true of the **slope** of  $\overline{PN}$ ?

- A It is half the slope of  $\overline{LN}$ .
- B It is half the slope of  $\overline{QN}$ .
- C It is the same as the slope of  $\overline{LN}$ .**
- ~~D It is the same as the slope of  $\overline{QN}$ .~~

★ Corresponding sides of similar  $\Delta$ 's have the same slope