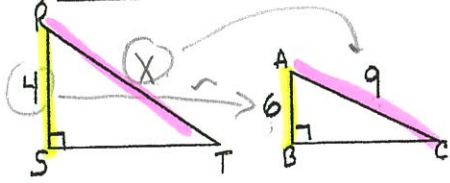


Name Key
Mrs. Roubos

Date _____
8R Period _____

Homework

1) Solve for \overline{RT}



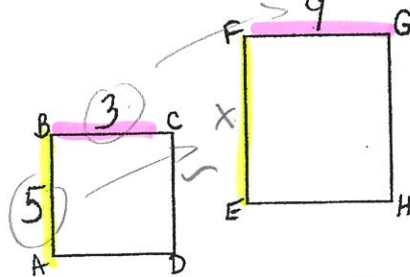
$$\frac{4}{6} = \frac{x}{9}$$

$$\frac{6x}{6} = \frac{36}{6}$$

$$x = 6$$

$\overline{RT} = 6$

2) Solve for \overline{FE}



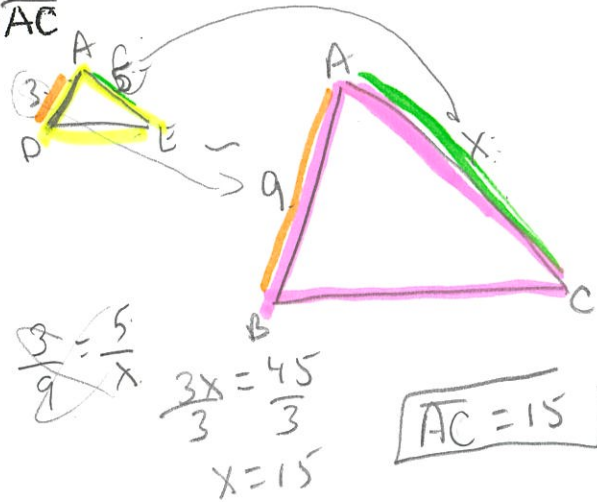
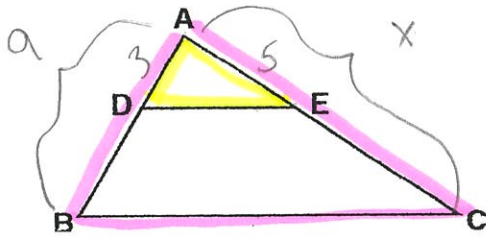
$$\frac{5}{3} = \frac{x}{9}$$

$$\frac{3x}{3} = \frac{45}{3}$$

$$x = 15$$

$\overline{FE} = 15$

3) In the accompanying diagram of $\triangle ABC$, $\overline{DE} \parallel \overline{BC}$, $\overline{AD} = 3$, $\overline{AB} = 9$, and $\overline{AE} = 5$. Find \overline{AC}



$$\frac{3}{9} = \frac{5}{x}$$

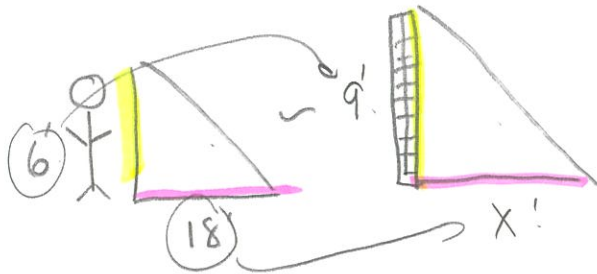
$$\frac{3x}{3} = \frac{45}{3}$$

$$x = 15$$

$\overline{AC} = 15$

Solve the following word problem:

4) If a six foot man casts an 18ft shadow, how long of a shadow would a 9ft wall cast?



$$\frac{6}{9} = \frac{18}{x}$$

$$\frac{6x}{6} = \frac{162}{6}$$

$$x = 27$$

$\overline{27ft}$