

Homework #57

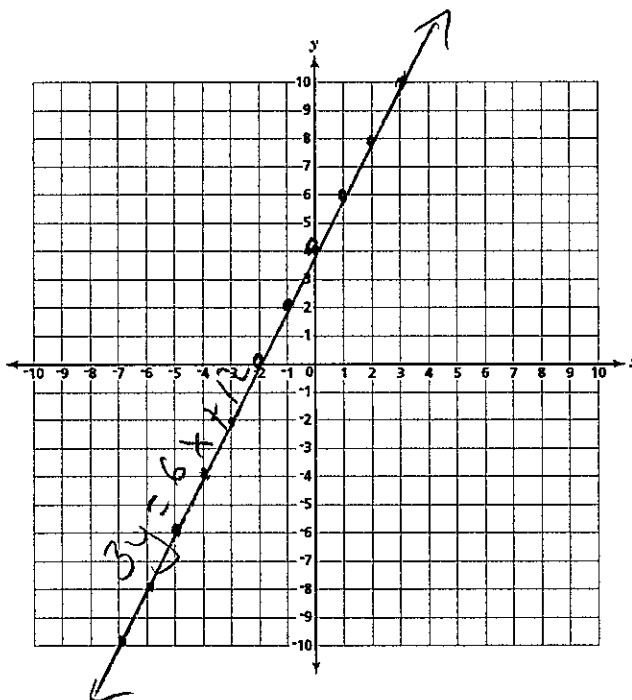
Graph the following equations. Make sure to label the slope (m) and the y-intercept (b) of each line

1) $\frac{3y}{3} = \frac{6x}{3} + \frac{12}{3}$

$y = 2x + 4$

$m = \frac{2}{1}$

$b = 4$



2) $\frac{2y + 8x}{-2} = \frac{10}{-2}$

$2y = -8x + 10$

$y = -4x + 5$

$m = \frac{-4}{1}$

$b = 5$

