

Homework #58

Graph the following equations. Make sure to label the slope (m) and the y-intercept (b) of each line

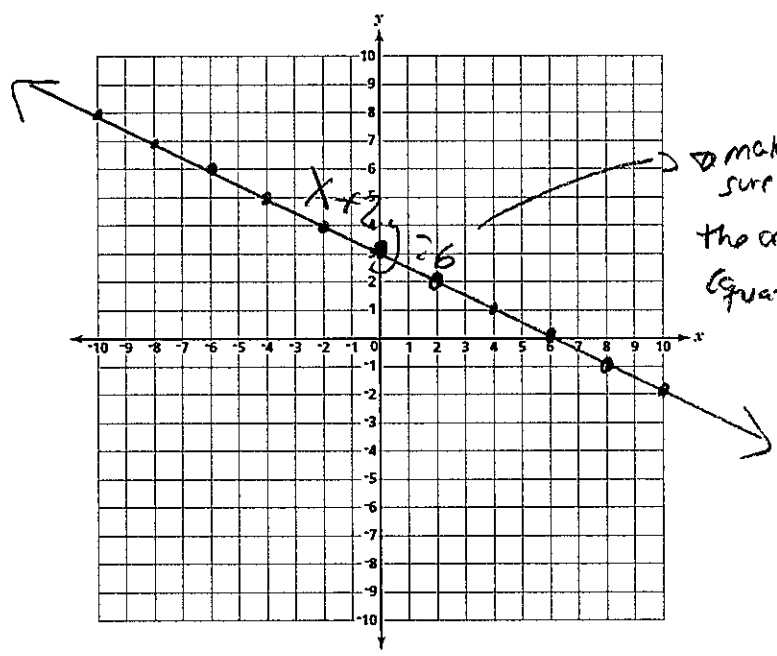
1) $x + 2y = 6$
 $\begin{array}{r} -x \quad -x \\ \hline \end{array}$

$$\frac{2y}{2} = \frac{-x + 6}{2}$$

$$y = -\frac{1}{2}x + 3$$

$$m = -\frac{1}{2}$$

$$b = 3$$

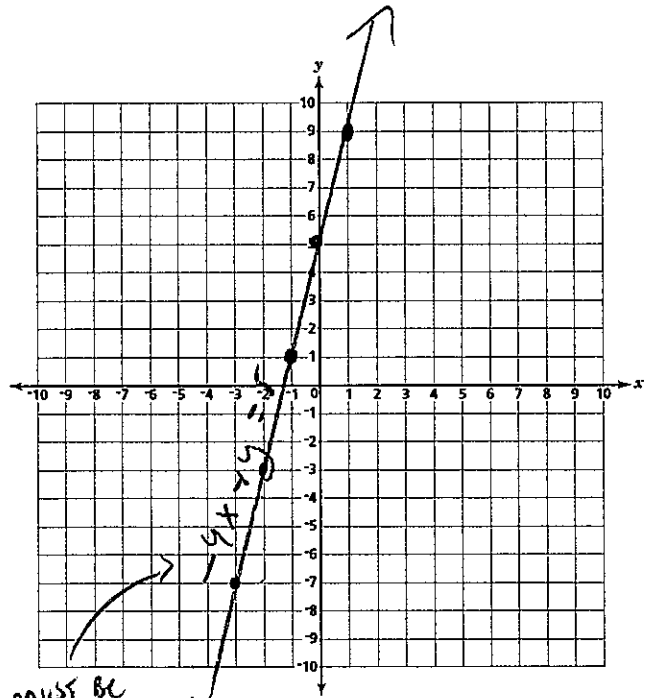


2) $-4x + y = 5$
 $\begin{array}{r} +4x \quad +4x \\ \hline \end{array}$

$$y = 4x + 5$$

$$m = \frac{4}{1}$$

$$b = 5$$



MUST BE the original equation