

Name: Key
Mrs. Roumbos

Date: _____
8R Period _____

Homework

1) Given the following relation:
 $\{(-2,1), (-1,0), (0,1), (-1,2)\}$

numerical order
Don't list repeats
use {}

PART A:
What is the range of the relation?

Answer: $\{0, 1, 2\}$

PART B:
What is the domain of the relation?

Answer: $\{-2, -1, 0\}$

PART C:
Explain how you arrived at your answers to Part A and Part B.

PART D:
Is the given relation a function? Why or why not?

Answer: NO, x-values (Domain) repeats
look at original coordinates

numerical order
Don't list repeats
use {}

2) State the domain and the range, for $\{(-6,2), (4,3), (1,1), (-7,2), (4,2)\}$.

Domain: $\{-7, -6, 1, 4\}$
Range: $\{1, 2, 3\}$

3) Is this relation a function? [Justify your answer.]

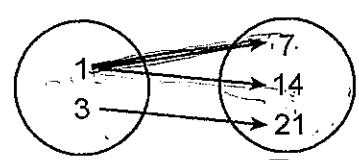
$\{(1,2), (5,8), (3,4), (6,3)\}$
Yes! x-values (Domain) Don't repeat.

4) Is this relation a function? [Justify your answer.]

$\{(-4,2), (-4,1), (-4,0), (-4,-1)\}$

NO, x-values repeat
(The -4 repeats)

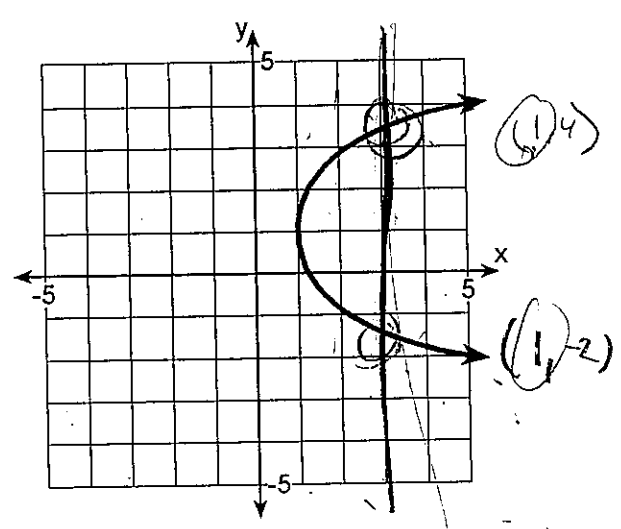
5) Is the following relation a function? [Justify your answer.]



$\{(1,7), (1,14), (3,21)\}$

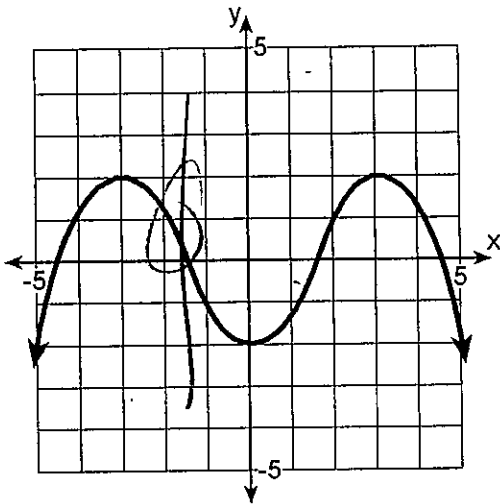
NO, x-values repeat

6) Determine if the following graph is a function. [Justify your answer.]



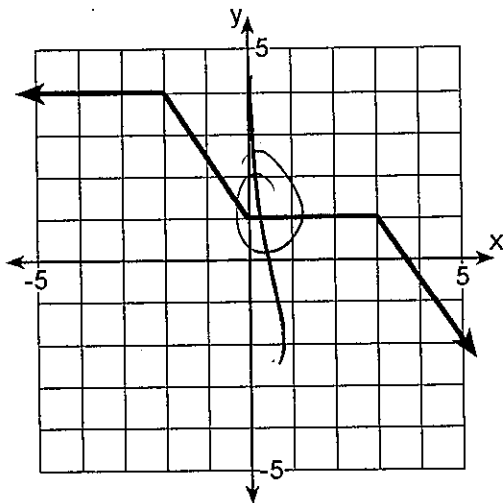
NO. Vertical line goes through graph twice
Fails the vertical line test

- 7) Determine if the following graph is a function. [Justify your answer.]



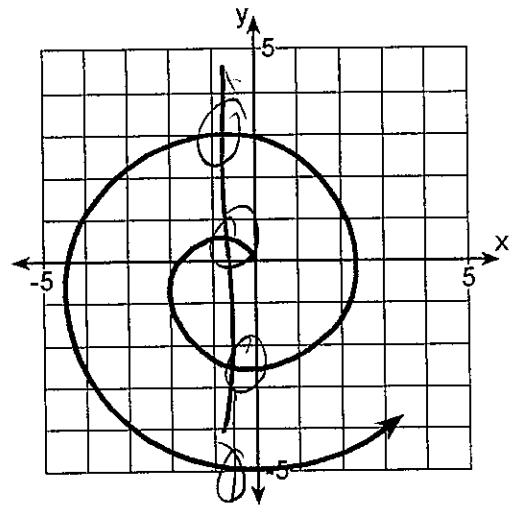
Yes! Vertical line only goes through once
Passes the vertical line test

- 8) Determine if the following graph is a function. [Justify your answer.]



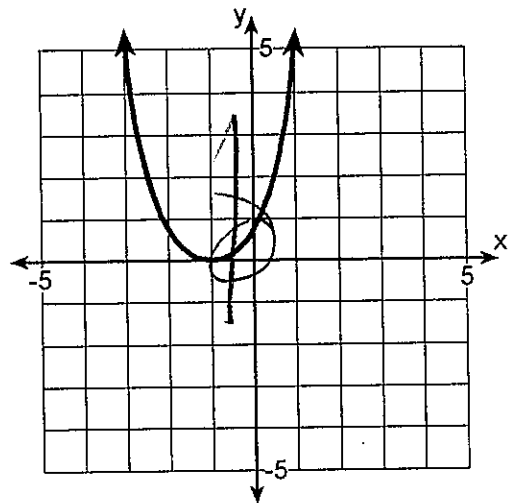
Yes vertical line only goes through once
passes the vertical line test

- 9) Determine if the following graph is a function. [Justify your answer.]



NO, the vertical line goes through more than one time
Fails the vertical line test

- 10) Determine if the following graph is a function. [Justify your answer.]



Yes! vertical line only goes through once
passes the vertical line test