

Name _____

LESSON

8

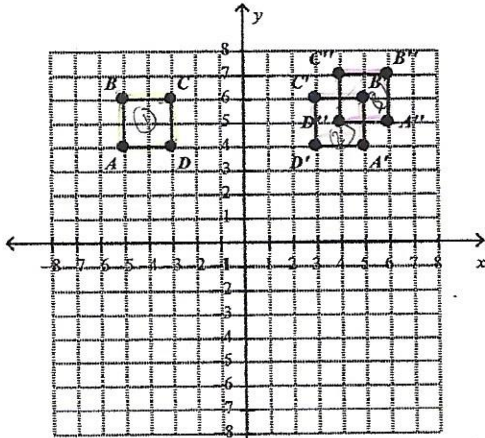
Geometric Relationships

* Homework *

Practice A: Identifying Combined Transformations

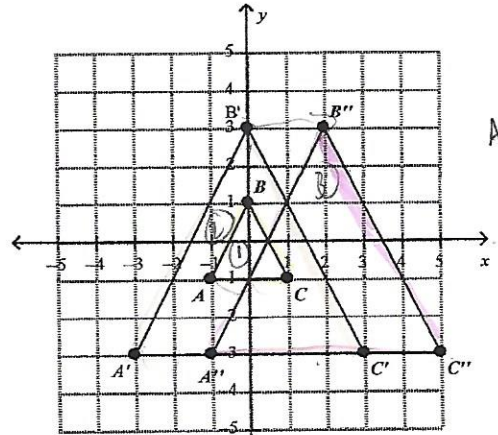
Identify the combined transformations from the original to the final image, and tell whether the two figures are similar or congruent.

1.



- 1) Reflection over the y-axis
 - 2) Translation 1 unit right + 1 unit up
- Congruent/Rigid

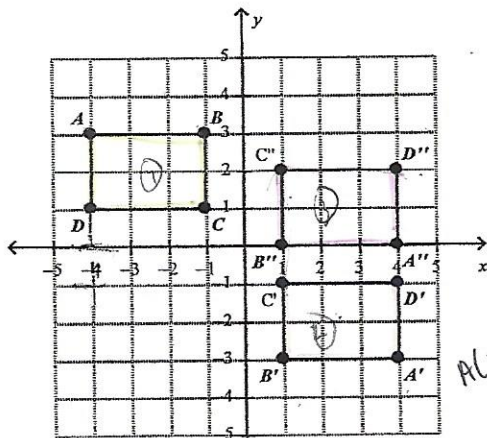
2.



$A(-1,1) \rightarrow A'(3,3)$

- 1) Dilation by a scale factor of 3
 - 2) Translation 2 units Right
- Similar / NON-Rigid

3.



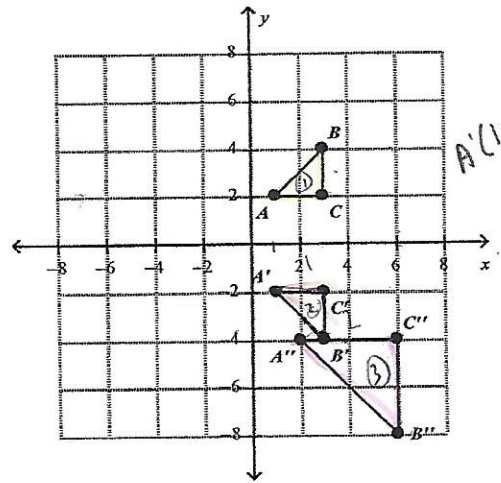
$A(-4,3) \rightarrow A'(4,3)$

- 1) Reflection over origin or Rotation 180°

- 2) Translation 3 units up

Congruent/Rigid

4.



$A'(1,2) \rightarrow A''(2,4)$

- 1) Reflection over the x-axis
- 2) Dilation by a scale factor of 2

Similar / NON-Rigid