

Name Key
Mrs. Roubos

Date _____
8R Period _____

Comparing Homework
*Nearest Hundredth

Compare the following

1) $-\sqrt{7} > -3.5$
 $-2.65 > -3.50$

2) $\sqrt{2} < 1.7320508...$
 $1.41 < 1.73$

3) $\pi > \frac{28}{9}$
 $3.14 > 3.11$

4) $\sqrt{3} + 2 < \sqrt{2} + 3$
 $1.73 + 2.00 < 1.41 + 3.00$
 $3.73 < 4.41$

5) $10 - \sqrt{8} < 12 - \sqrt{2}$
 $10.00 - 2.83 < 12.00 - 1.41$
 $7.17 < 10.59$

6) $\frac{2}{3} < 6$
 $.67 < 6.00$

Order the numbers from least to greatest

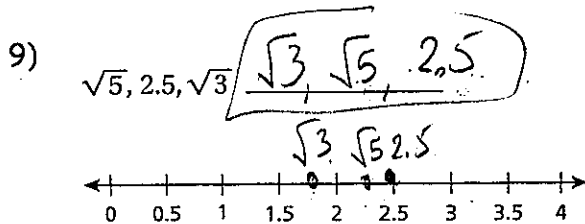
7) $\sqrt{10}, \pi, 3.5$
 $\downarrow \quad \downarrow \quad \downarrow$
 $3.16 \quad 3.14 \quad 3.50$

$\pi, \sqrt{10}, 3.5$

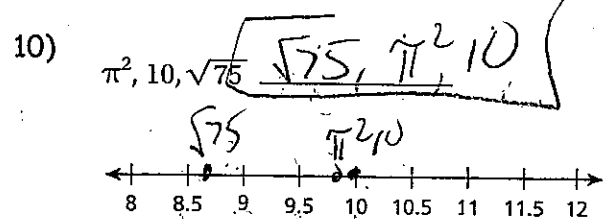
8) $2\sqrt{7}, \sqrt{24}, 2\pi$
 $\downarrow \quad \downarrow \quad \downarrow$
 $5.29 \quad 4.90 \quad 6.28$

$\sqrt{24}, 2\sqrt{7}, 2\pi$

Order the numbers from least to greatest and then plot them on a number line



$\sqrt{5} \approx 2.24$ ②
 $2.5 \approx 2.50$ ③
 $\sqrt{3} \approx 1.73$ ①



$\pi^2 \approx 9.87$ ②
 $10 \approx 10.00$ ③
 $\sqrt{75} \approx 8.66$ ①